



## VCDS (VAG-COM) Logging Guide

### Safety

Safety is extremely important. Logging may involve high speeds so only do logs when it's safe to do so. The best place to take logs is on a dyno (rolling road), although many people do logs on public roads. We are not liable for anything that happens when you do logs!

### General

- Most logs are done in 3<sup>rd</sup> gear Wide-Open-Throttle (WOT) from 2000 RPM (gas/petrol) or 1500 to redline.
- For cars equipped with automatic transmission, try forcing 3<sup>rd</sup> gear in "manual mode" if possible. WOT at low RPM can cause the transmission to downshift automatically. To stay in gear, apply only partial throttle at low RPM and then WOT at around 3000 RPM. With a little practice you can find what works best.

### Measuring Blocks to Log

Logging instructions are available in the following pages.

<b>VAG Turbo Gas (Petrol) with 4 cylinders</b>	<ul style="list-style-type: none"><li>• 003+115+020 (log three at once)</li><li>• 003+118+031 (log three at once)</li></ul>
<b>VAG Turbo Gas (Petrol) with 5 or more cylinders</b>	<ul style="list-style-type: none"><li>• 003+115+118 (log three at once)</li><li>• 031+015+016 (log three at once)</li><li>• 003+020+021 (log three at once)</li></ul>
<b>VAG Non-Turbo Gas (Petrol) with 4 cylinders</b>	<ul style="list-style-type: none"><li>• 003+020+031 (log three at once)</li></ul>
<b>VAG Non-Turbo Gas (Petrol) with 5 or more cylinders</b>	<ul style="list-style-type: none"><li>• 020+021+031 (log three at once)</li><li>• 003+015+016 (log three at once)</li></ul>
<b>VAG TDI 1996-2003 Or any VE TDI</b>	<ul style="list-style-type: none"><li>• 001 • 003 • 004 • 008 • 011</li></ul> <p><i>log only one at a time.</i></p> <p>With the engine turned off (leave the key "on"), log the following group for a few seconds to measure atmospheric pressure:</p> <ul style="list-style-type: none"><li>• 010</li></ul> <p><i>we can take into account the altitude/elevation of each TDI we tune!</i></p>
<b>VAG TDI 2004-2007 Or any PD TDI</b>	<ul style="list-style-type: none"><li>• 001+003+004 (log three at once)</li><li>• 008+011 (log two at once)</li></ul> <p>With the engine turned off (leave the key "on"), log the following group for a few seconds to measure atmospheric pressure:</p> <ul style="list-style-type: none"><li>• 010</li></ul>

# TUNEZILLA

## VAG TDI 1996-2007 with larger turbo (Stage 5 Custom)

Log all the TDI blocks listed above AND the following:

WOT from approximately 40km/h (25mph) to 140km/h (90mph) starting in 3<sup>rd</sup> gear (you can shift into 4<sup>th</sup> during this run):

- 007+011+006 (log three blocks at once)  
*before taking this log, cool down your intercooler by driving at very low engine load for several minutes. This includes cruising at a steady speed on level road or downhill.*

**4<sup>th</sup> gear** WOT from 1,250 RPM to redline. Take it 2 times. This log is important for optimizing boost control in the entire RPM range.

- 011

If you have a US-spec 2004-2005 Passat TDI, then please log the following groups instead of just 011:

- 011+067

## VAG TDI 2009+ Common Rail TDI

Log these blocks in 3<sup>rd</sup> gear:

- 001+003+004
- 008+011+099

## Why take VCDS Logs?

Your vital engine data (such as boost, fuel quantity, timing, MAF, etc.) is recorded as you drive. They help us ensure that there are no problems with your engine before tuning, and to ensure that it is performing optimally after a tune. Although installing any tune without logging is possible (aka "tuning blindly"), using logs help bring the best out of your engine.

## What do I need?

You need a VAG-COM cable or OBD2 logger and a laptop. Official VAG-COM cables can be purchased at <http://www.ross-tech.com>.

## Step-by-Step Logging Guide

Ensure that the VAG-COM cable is connected to your car and your laptop. Open the VAG-COM software.

1. Click the **Select** button:



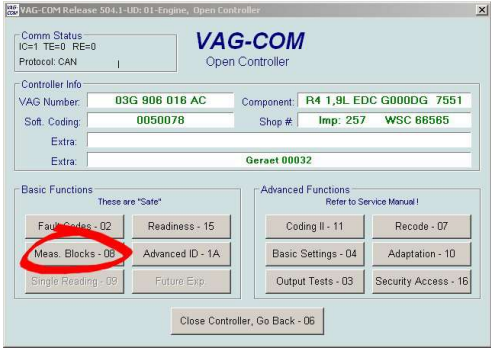

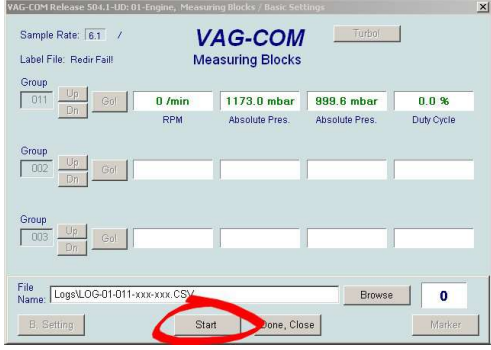

2. Click the **Engine** button:



3. Click the **Meas. Blocks** button:

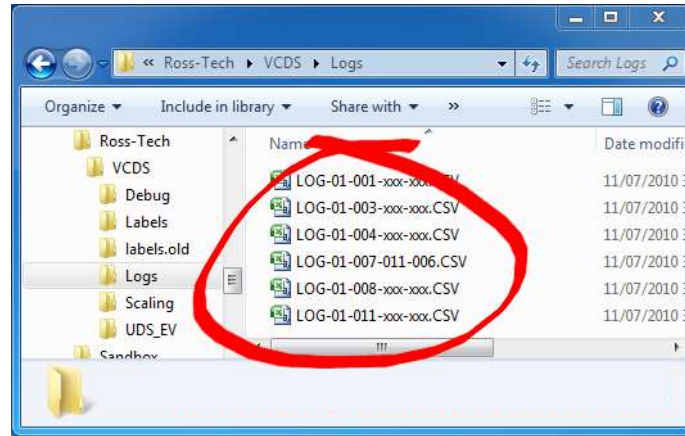
4. Select a block (or blocks) to log. Refer to the list of blocks near the top of this document.

# TUNEZILLA

 <p>VAG-COM Release 504.1-UD: 01-Engine, Open Controller</p> <p>Comm Status: IC=1 TE=0 RE=0 Protocol: CAN</p> <p>VAG Number: 03G 908 018 AC Component: R4 1.9L EDC G000DG 7551 Soft. Coding: 0050078 Shop #: Imp: 257 WSC 66565 Extra: Geraet 00032</p> <p>Basic Functions: Fault Codes - 02, Readiness - 15, Mess. Blocks - 08, Advanced ID - 1A, Single Reading - 09, Future Exp.</p> <p>Advanced Functions: Coding II - 11, Recode - 07, Basic Settings - 04, Adaptation - 10, Output Tests - 03, Security Access - 16</p> <p>Close Controller, Go Back - 06</p>	 <p>VAG-COM Release 504.1-UD: 01-Engine, Measuring Blocks / Basic Settings</p> <p>Sample Rate: 5.5</p> <p>Label File: Redir Fail</p> <p>Group 011: 0 /min, 1173.0 mbar, 999.8 mbar, 0.0 % RPM Absolute Pres. Absolute Pres. Duty Cycle</p> <p>Group 002: [Up] [Dn] [Go]</p> <p>Group 003: [Up] [Dn] [Go]</p> <p>Refer to Service Manual</p> <p>Switch To Basic Settings Done, Go Back VAG-Scan Log</p> <p>Log only one channel at a time, unless otherwise specified</p>
<p>5. Click the <b>Log</b> button (shown in step 4, circled).</p>	<p>6. Click the <b>Start</b> button to begin logging:</p>  <p>VAG-COM Release 504.1-UD: 01-Engine, Measuring Blocks / Basic Settings</p> <p>Sample Rate: 6.1</p> <p>Label File: Redir Fail</p> <p>Group 011: 0 /min, 1173.0 mbar, 999.8 mbar, 0.0 % RPM Absolute Pres. Absolute Pres. Duty Cycle</p> <p>Group 002: [Up] [Dn] [Go]</p> <p>Group 003: [Up] [Dn] [Go]</p> <p>File Name: Logs\LOG-01-011-xxxx-xxxx.CSV</p> <p>B. Setting Start Done, Close Marker</p>
<p>7. Click the <b>Stop</b> button at the end of your run:</p>  <p>VAG-COM Release 504.1-UD: 01-Engine, Measuring Blocks / Basic Settings</p> <p>Sample Rate: 6.1</p> <p>Label File: Redir Fail</p> <p>Group 011: 0 /min, 1173.0 mbar, 999.8 mbar, 0.0 % RPM Absolute Pres. Absolute Pres. Duty Cycle</p> <p>Group 002: [Up] [Dn] [Go]</p> <p>Group 003: [Up] [Dn] [Go]</p> <p>File Name: Logs\LOG-01-011-xxxx-xxxx.CSV</p> <p>B. Setting Stop Done, Close Marker</p>	<p>8. Repeat steps #4-7 until you complete all groups.</p>

# TUNEZILLA

After you complete logging you can find your log files in **C:\Ross-Tech\VCDS\Logs\** or in **C:\Program Files\VAG-COM\Logs\**:



You can upload the log files at <https://log.tunezilla.com/> if you want to view them in charts, or, if Tunezilla is working with you on your tune, Logs can be uploaded to your existing ticket, or a new one can be created here - <https://tickets.tunezilla.com/tickets/new>