



HALDEX SPRING UPGRADE GEN 5 OCQ (MQB)

<INSTALL GUIDE>



Hardware

1x Pressure Relief Spring
3x Driveshaft bolts



Tools Required

Ratchet
Socket extension
6mm Allen socket
10mm 12pt Socket
Torque wrench
Pry bar
Bench Vice (Recommended)

VCDS or OBD Eleven - Required to reset adaptations

We recommend performing a Haldex service at the same time as install



Step 1

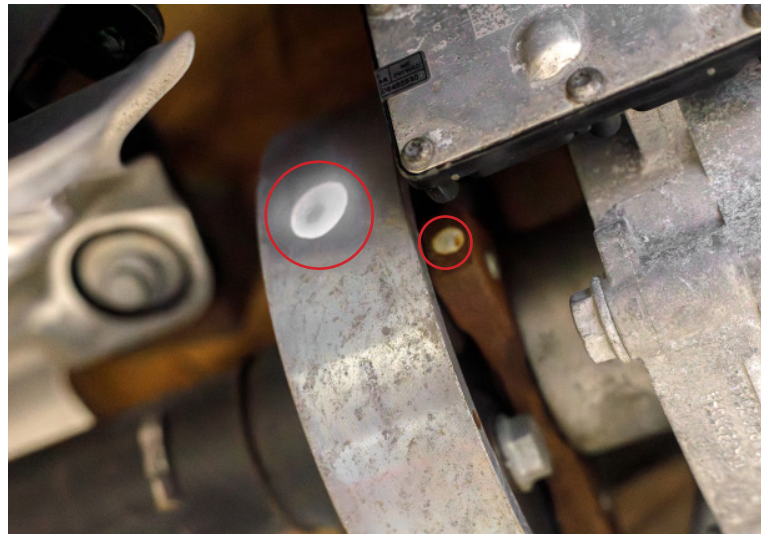
Remove the catback portion of your exhaust to gain access to the driveshaft bolts connecting the driveshaft to the rear differential.



Step 2

Before unbolting the driveshaft from the rear differential, make note of the 2 white dots. We'll need to align these again during re-installation.

*you can make your own reference marks if necessary.





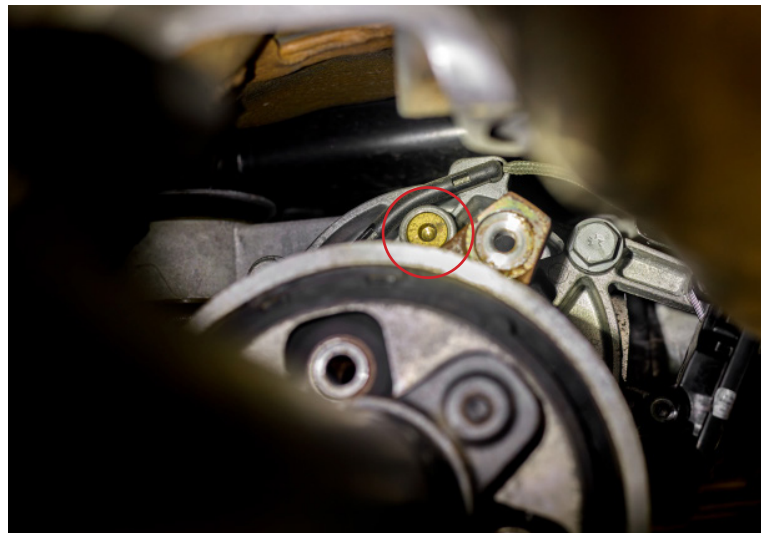
Step 3

Unbolt the 10mm 12pt bolts connecting the guibo disc to the differential.



Step 4

Once you have removed the bolts from the differential, you will be able to move the driveshaft downwards to gain access to the pressure valve. Your pry bar will come in handy now.





Step 5

Using your 6mm Allen socket, Remove the valve.



You should have something like this.



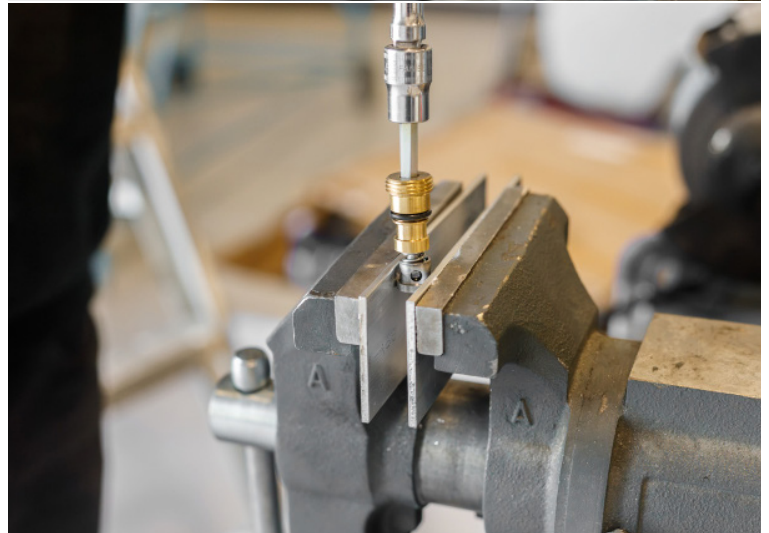
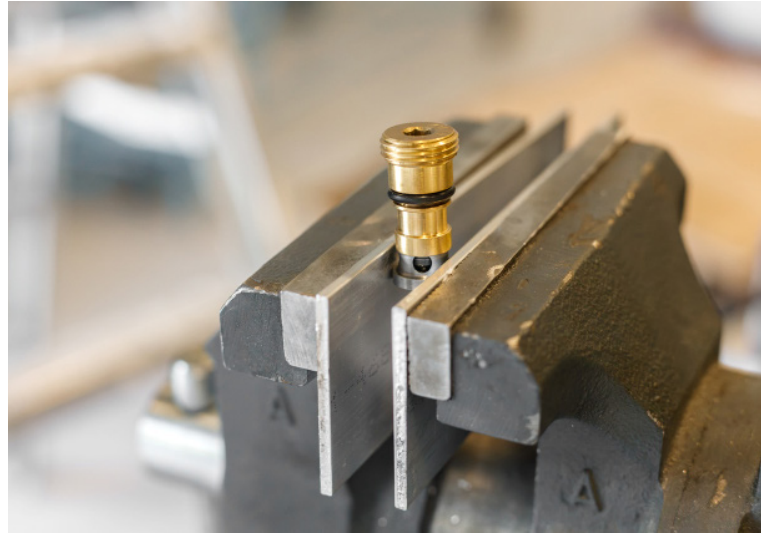


Step 6

The valve is pressure fit together. To open, secure bottom in a vice making sure not to damage it.

Using your Allen key, twist the brass fitting to break it loose from the rest of the valve. You may need to apply upwards force pulling the valve apart while you twist.

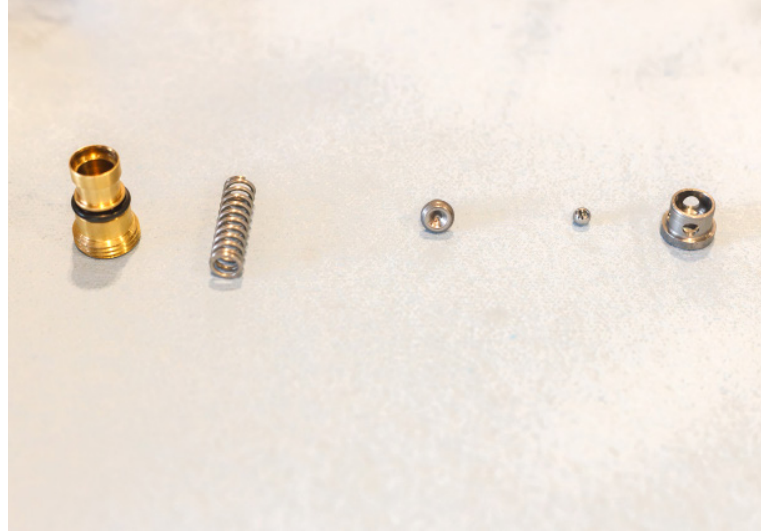
**Take care not to lose internals when separating the valve.





Step 7

With the valve apart, you will now be able to swap out the spring. Making sure to re-install in the same order as removal.



Step 8

The valve can now be pressed back together using a vice and then re-installed in the haldex unit.





Step 9

Re-installation is opposite of removal.



Torque spec:
Driveshaft bolt = 50NM





Step 10

Reset adaptations for Haldex unit.

Vehicle must be running while performing the Haldex adaptation.

In VCDS perform the following steps.

NOTE: The Haldex temperature must be between 20°C and 30°C

Select – 22 – AWD

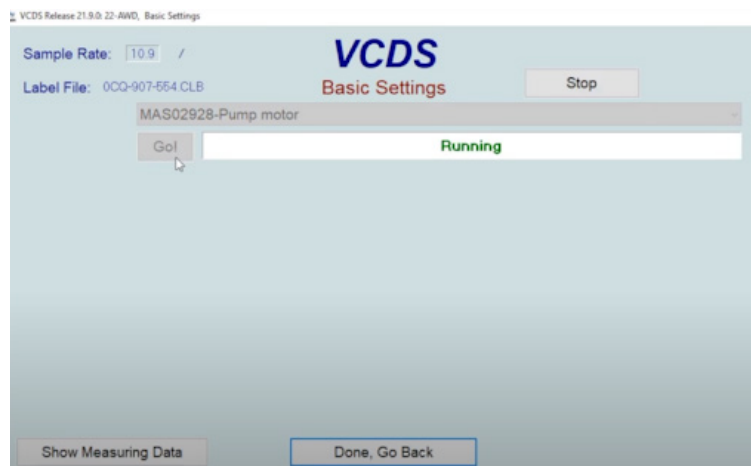
Select – Basic Settings – 04

Use the drop-down menu and select – MAS02928 – Pump Motor

Select – Go

Once selected you should be able to hear the pump cycle itself for around 30 seconds to a minute while it relearns its cycles.

When the process is completed, you should see a message advising – finished correctly



for more information visit tunezilla.com