



FLASHZILLA USER GUIDE rev1.7



Table of Contents

- Introducing FlashZilla
- Frequently Asked Questions
- Precautions
- Installing FlashZilla Software
- Configuring FlashZilla
- FlashZilla Communication with Your Vehicle

Introducing FlashZilla

The FlashZilla can read and program the engine computer (aka ECU and ECM) via the OBDII diagnostic port. It is a convenient means of installing tunes for your vehicle.

FlashZilla can also be used to scan and delete fault codes in your engine computer.

Items Included

1x FlashZilla Programmer

1x USB Cable for connecting to your PC. This is a common type of USB cable similar to Printer cables.

1x OBD2 Cable for connecting to your vehicle.



FLASHZILLA USER GUIDE rev1.7

Diagnostic port location

Your FlashZilla communicates with your vehicle via the diagnostic port.

AUDI

Underneath the steering wheel, above the pedal assembly.
For read time allow 20 minutes.
For programming time allow 10 minutes.

VW

Underneath the steering wheel, above the pedal assembly.
For read time allow 20 minutes.
For programming time allow 10 minutes.

JEEP

Underneath the steering wheel, above the pedal assembly.
For read time allow 20 minutes.
For programming time allow 10 minutes.

MERCEDES

Underneath the steering wheel, above the pedal assembly.
For read time allow 20 minutes.
For programming time allow 10 minutes.

Frequently Asked Questions

Q: Does FlashZilla come pre-loaded with tunes?

A: No, you must download a copy of your ECU software using FlashZilla. You will then e-mail us your file and we will modify it.

Q: Will my car be inactive between the time I download my stock ECU file and the time I upload a new tune?

A: No, FlashZilla just reads a copy of your ECU file, it does not remove it.

Q: How many tunes can FlashZilla store?

A: It has three slots: One for your Original ECU software and two for Tuned ECU software's. You can swap in more ECU tunes from your computer at any time, almost like swapping music to an iPod.

Q: Is there a limit in how many times FlashZilla can write the car? A:

No.

Q: Can I sell the FlashZilla?

A: Yes. In order to unlock FlashZilla for the new car, you must upload the "Original" ECU software from FlashZilla to your car first.



FLASHZILLA USER GUIDE rev1.7

Precautions

Modified files (tunes) are intended for off-road use only and must not be used on any public highway. Respect your local laws.

Before using the FlashZilla, turn off the engine, get out of gear (into Neutral or Park), and activate the hand brake.

The engine should not be running while FlashZilla is plugged in. When you are asked to turn the key “on”, turn it until your instrument cluster lights are on but do not run the engine.

Turn off all electronic devices in your car (including but not limited to radio, air conditioning, ventilation fans, and interior light). It is especially important to keep your battery voltage steady during the FlashZilla operation. If the battery condition is suspect, a battery charger or booster should be used to support the battery voltage during the read and write operations.

Make sure the FlashZilla cable is connected securely. Do not disconnect or interrupt the FlashZilla’s connection to your vehicle during read or write operations. Doing so may result in engine no-start until your engine computer is repaired.

Pay attention to FlashZilla’s on-screen instructions.

During read and write operations, the radiator fans may start, or your instrument cluster may start blinking. This is normal.

Once the modified file (tune) is installed in a car, the FlashZilla is limited to use with that car. Erasing the FlashZilla (for use with a different car) is possible only after the original file is restored in the car.

Installing FlashZilla Software

1. Visit www.tunezilla.com/fz
2. Click the link Download FlashZilla Software and save the file to your computer.
3. Open the downloaded file. You will be guided during the installation process.
4. If you see a warning message “Windows can’t verify the publisher,” select “Install this driver software anyway.”
5. Finish the installation and then connect FlashZilla to your computer using the provided USB cable.
6. If you have Windows Vista or Windows 7, then it should automatically recognize the FlashZilla.
7. If you have Windows XP, a “Found New Hardware” window may appear. Follow these steps:
 - a. When asked “Can Windows connect to Windows Update to search for software,” select “No, not this time”.
 - b. When asked “What do you want the wizard to do?”, select “Install the software automatically (Recommended)”.
 - c. If you see the following warning, select “Continue Anyway”.



FLASHZILLA USER GUIDE rev1.7



Your FlashZilla device is now ready for communication with your computer.

Configuring FlashZilla with your Computer

1. Run FlashZilla software (Start menu > Programs > FlashZilla > FlashZilla).
2. Connect FlashZilla unit to your computer with the USB cable.
3. Click the Link button to start the communication between the PC and your FlashZilla.



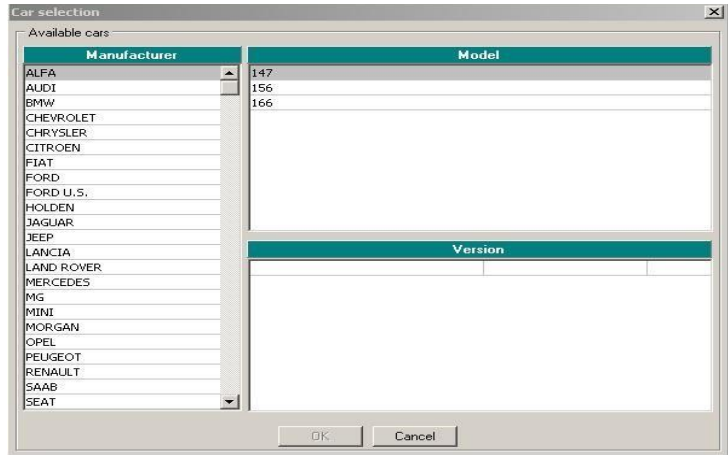


FLASHZILLA USER GUIDE rev1.7

4. If this is the first time you are connecting the FlashZilla and if the Erase button is active, click it to erase the contents of your FlashZilla.



5. After the Link button is clicked, you will be automatically prompted to choose your vehicle type (this step is done only once):



Common ECU “Family” Selection Guide (not all vehicles are listed in this document. Please ask us if you need assistance):



FLASHZILLA USER GUIDE rev1.7

VW

For the following vehicles...

- 2000-2003 Jetta and Golf TDI with rotary pump engine EDC15V or EDC15P
- 2000+ PD100/115/130/150/160, and other cars with EDC15P (these EDC15P cars are normally found outside of North America)

... select Family 105: (VW >> Golf IV >> 1900 TDI ALE/AGR/ALH 90HP)

For the following vehicle...

- 2000-2003 New Beetle TDI with rotary pump engine EDC15P (ALH, ASV, AFN)

... select Family 106: (VW >> New Beetle >> 1900 TDI ALH 90HP)

Attn New Beetle owners: Turn on the radio at minimum volume during the read/write process with FlashZilla!
As odd as it may sound, it increases the stability of the read/write process.

For the following vehicles...

- 2004+ Golf, Jetta, and Beetle with 1.9 liter 100 HP PD engine EDC16 (includes BEW, BRM, etc.)
- 2004-2005 Passat with 2.0 liter 136 HP TDI engine (BHW)
- All other VAG TDI cars with EDC16 ECU

... select Family 128: (VW >> Golf V >> 1900 TDI 8V BJB/BKC/BXE/BLS 105HP)

Attn Passat owners: If FlashZilla asks you select a read speed, then you may need to select HIGH instead of MAXIMUM in order to have a successful read.

Attn New Beetle owners: If FlashZilla asks you select a read or write speed, then choose MINIMUM to ensure stability. This can take a long time to complete. A battery charger is recommended to maintain steady power.

For the following vehicles...

- Golf/Jetta/New Beetle 150HP 1.8T, 180HP 1.8T, 2.8L VR6, 2.5L I5, and 4.0L W8 275hp

... select Family 127: (VW >> Golf IV >> 1800 20V TURBO 180HP)

Mercedes

For the following vehicles...

- Mercedes Sprinter 2002-2003 (W905)

... select Family 120: (Mercedes >> Sprinter (905) >> 216 2700 CDI OM612DE27LA 156HP EDC15C6)

- Mercedes Sprinter 2004-2006 (W905)

... select Family 120: (Mercedes >> Sprinter (905) >> 216 2700 CDI OM612DE27LA 156HP EDC16C31)



FLASHZILLA USER GUIDE rev1.7

Mercedes cont'd

- Mercedes Sprinter 2007-2009 (W906)
... select Family 120: (Mercedes >> Sprinter (906) >> 418 3000 CDI OM642DE27LA 184HP EDC16CP31
- Mercedes E320 2005-2007 (E211)
... select Family 120: (Mercedes >> E (211) >> E320 3200 CDI OM646DE32LA 204HP EDC16C2
- Mercedes E320 2007-2009 (E211)
... select Family 120: (Mercedes >> E (211) >> E320 3000 CDI OM646DE32LA 224HP EDC16CP31

Other Mercedes 2006-2008 3.0L CDI:

Choose **Family 120** in any of the following in FlashZilla V2 vehicle lists:

Mercedes > ML (W164)

Mercedes > G (W463)

Mercedes > R (W251) Mercedes

> S (W220)

Jeep

- Jeep Liberty (KJ) 2005-2006
... select Family 122: (Jeep >> Liberty (KJ) >> 2800 16 VCRD 163HP EDC16 C-C2
- Jeep Grand Cherokee (WK) 2007-2008
... select Family 122: (Jeep >> Grand Cherokee (WK) >> 3000 CRD 218HP EDC16+CP31

6. After you have chosen the family that suits your vehicle, your FlashZilla update process will begin. You will also be prompted to choose a language (English may be the only language available).
7. Once your FlashZilla update is complete, disconnect it from your PC by unplugging the USB cable. It is now ready for your vehicle.



FLASHZILLA USER GUIDE rev1.7

FlashZilla Communication with your Vehicle

Download your vehicle's original file (a required procedure, done only once).

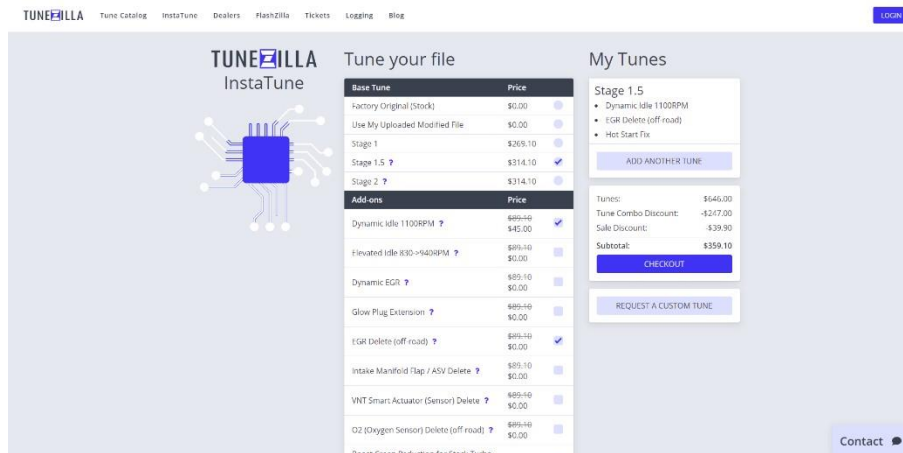
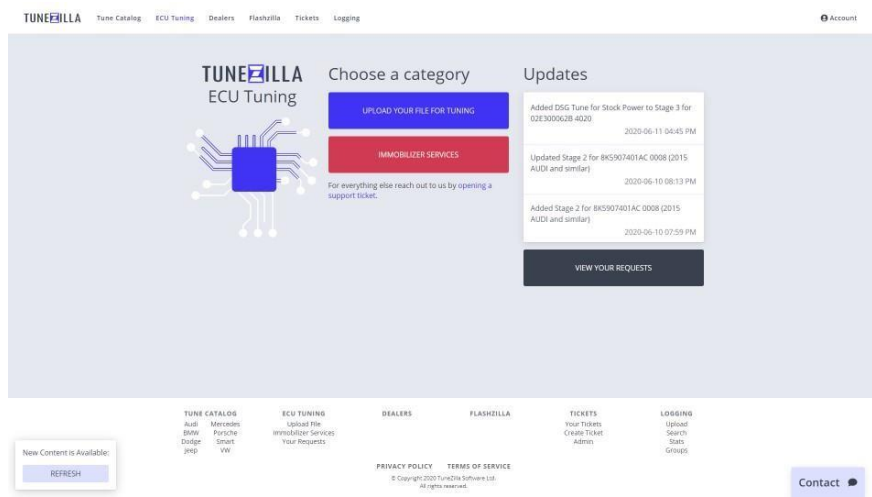
1. Locate the OBD2 diagnostic port in your vehicle. Refer to Diagnostic Port Locations near the top of this guide for assistance. Contact <https://tickets.tunezilla.com/tickets/new> or an authorized dealer if you need further help.
2. Connect the FlashZilla to the diagnostic port using the included OBD2 cable.
3. Choose "Read ECU File" and follow the instructions on the FlashZilla display.
4. After the Read is complete, disconnect the OBD2 cable from FlashZilla.
5. Connect FlashZilla unit to your computer via USB cable.
6. Open the FlashZilla software in your computer.
7. Click the Link button to start the communication between the PC and your FlashZilla.
8. Click the Read ORI button to transfer the file to your PC.





FLASHZILLA USER GUIDE rev1.7

Your original file is now ready to be uploaded to <https://tunezilla.com/tuning>. Once the file has decoded you will be able to select you tune and add on options, you will then need to input your information and then proceed to the checkout process.



Once the payment has been accepted the file will then start to encode, once finished the file will automatically download to your destination folder.

* If the stock file is not available the website it will prompt you to create a ticket where a member of staff will be assigned and help you get the file processed manually.



FLASHZILLA USER GUIDE rev1.7

Loading your Modified File

1. Review the precautions on Page 4!
2. The modified file you receive may be zipped (with a .zip file extension). In that case, extract the modified file to your Windows desktop first.
3. Connect your FlashZilla to the computer with the USB cable. Open the FlashZilla software and click the Link button.
4. Click the **Upload MOD** button.



5. Select the modified file on your desktop.
6. Once the upload procedure of the modified file is finished, disconnect FlashZilla from the computer and take it to your vehicle.
7. With the ignition key off, connect FlashZilla to the OBD2 diagnostic port (using the provided OBD2 cable) and select the ECU write procedure. Turn your ignition key on when FlashZilla asks you to.

New Beetle owners must turn on the radio at minimum volume during the write process with FlashZilla! As odd as it may sound, it increases the stability of the write process. If prompted by FlashZilla, select MINIMUM speed.
8. When prompted, use the arrow keys to highlight the modified file you wish to use. Press the “Y” key to select this file.
9. Follow the instructions on the FlashZilla display through the process of writing the modified file to your ECU.



FLASHZILLA USER GUIDE rev1.7

10. When the display indicates “Successfully Completed”, disconnect the OBD2 cable from your vehicle and turn off the key. Wait 10 seconds before turning the key back on. Wait 10 seconds again before starting the engine. Congratulations, your engine is now tuned!
11. Automatic Transmission/DSG only: Be sure to use your VAG-COM (VCDS) to clear trouble codes in your Transmission Controller before continuing.
12. After writing a file to your ECU, FlashZilla will ask you if you want to “keep counter value” or “reset counter value”. It does not matter what you choose, but “keep counter value” is recommended as it’s quicker.
13. Go enjoy your new tune and new found power!

Tunezilla Ltd.
custom remapping service

www.tunezilla.com